

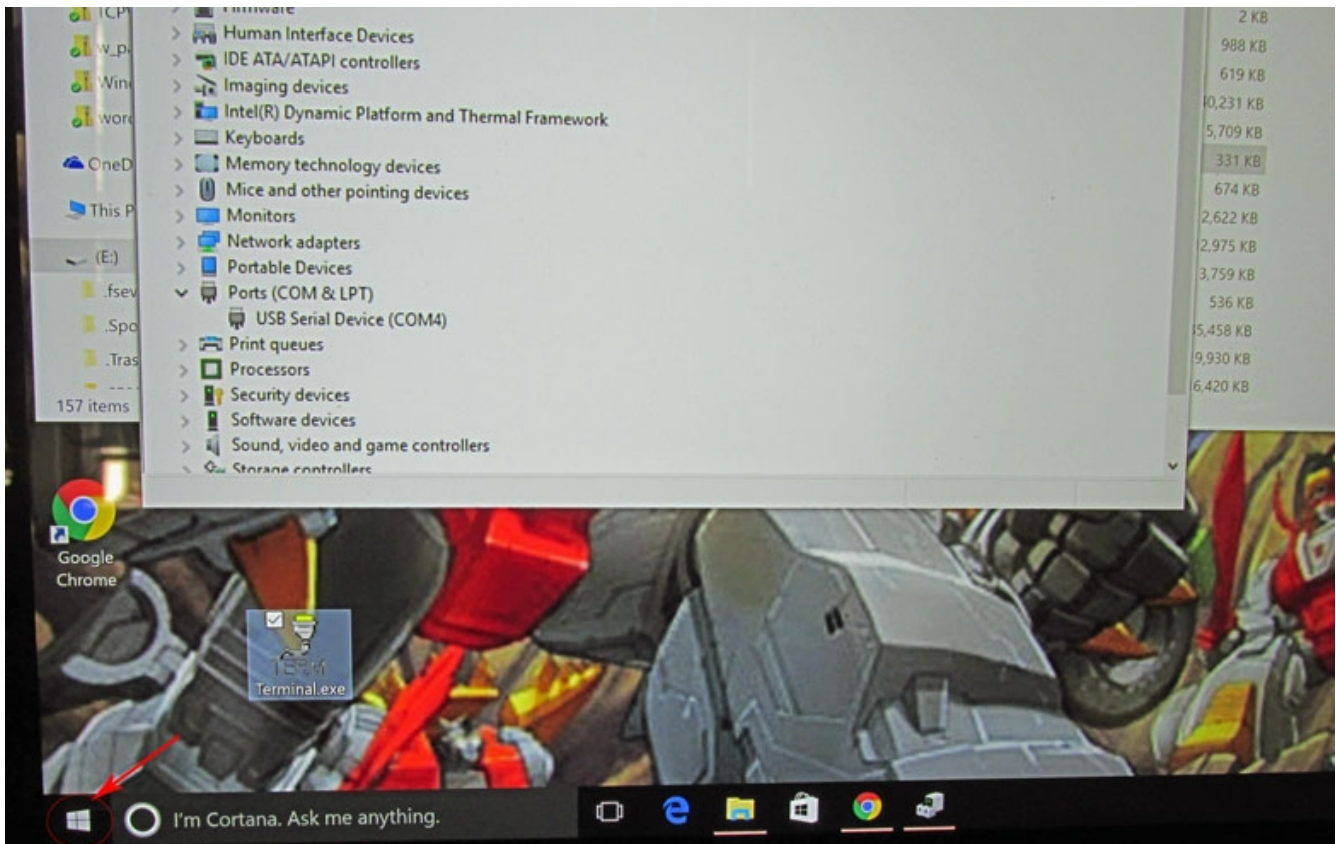
Windows 10 NoLand device driver installation error – signature test fails

When you first attempt to install the driver for our AM43 on Windows 10, you may get the following error message.

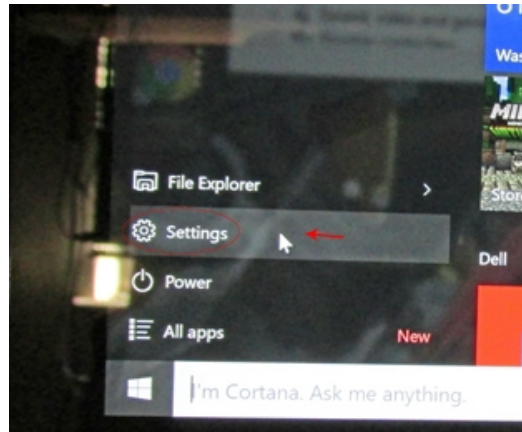
Windows encountered a problem installing the driver software for your device. Windows found driver software for your device but encountered an error while attempting to install it. The hash for the file is not present in the specified catalog file. The file is likely corrupt or the victim of tampering.

To solve this problem, you will have to turn off the Windows 10 Device Driver Signing feature.

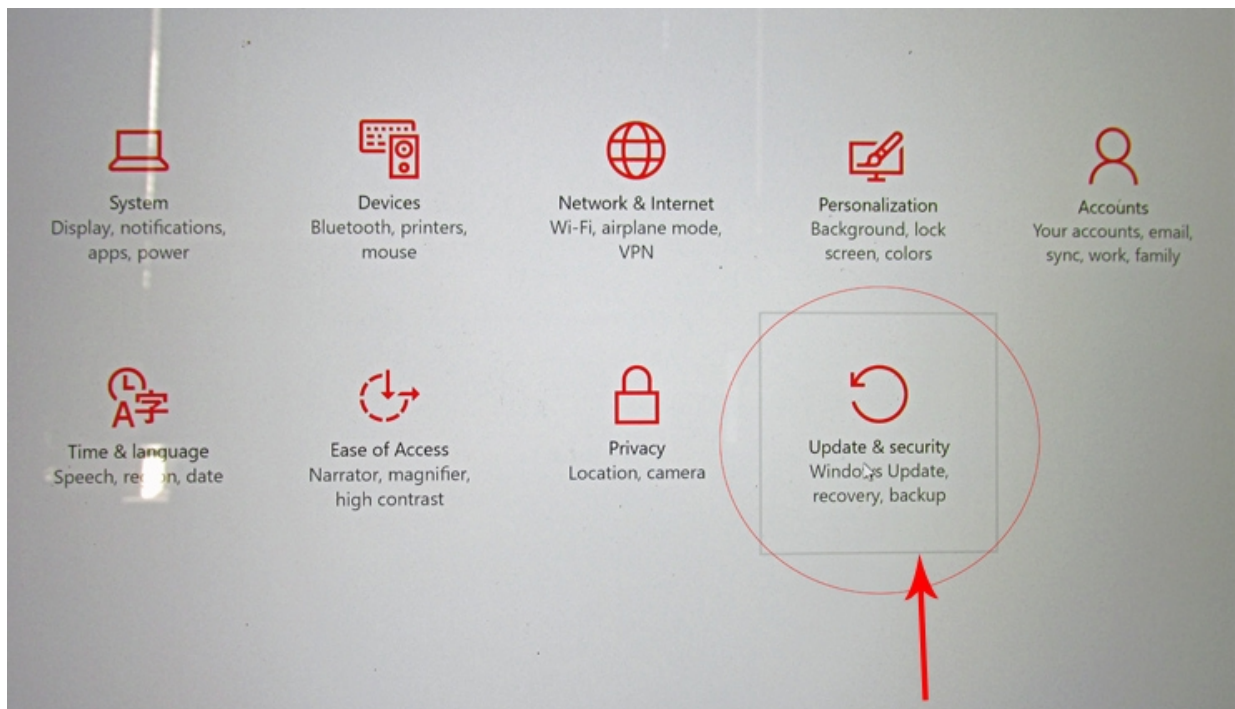
1. Select the **Start** menu.



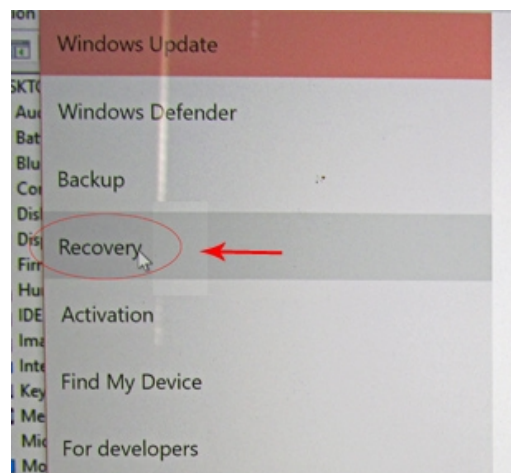
2. Open **Settings**.



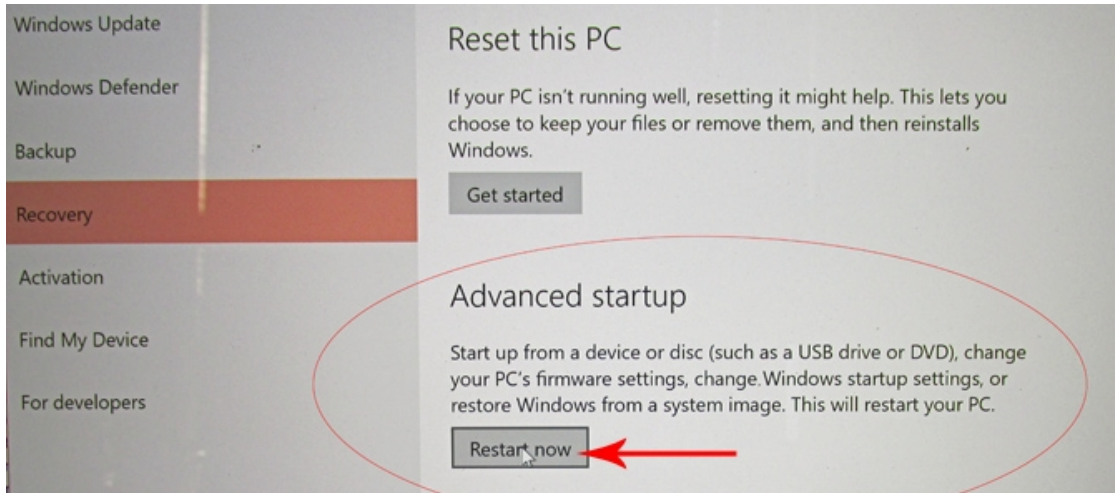
3. Click on **Update & Security**.



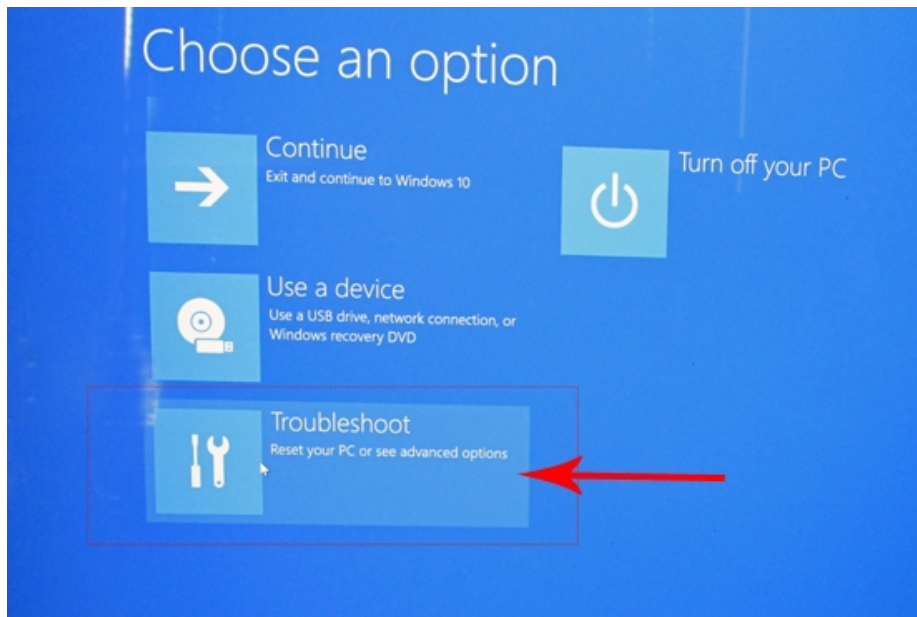
4. Click on **Recovery**.



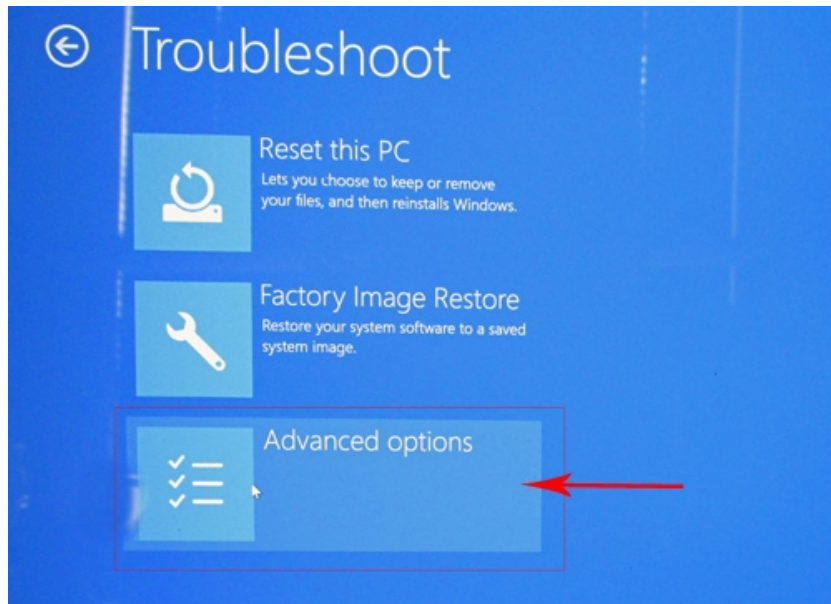
5. Click on Restart Now button under Advanced startup.



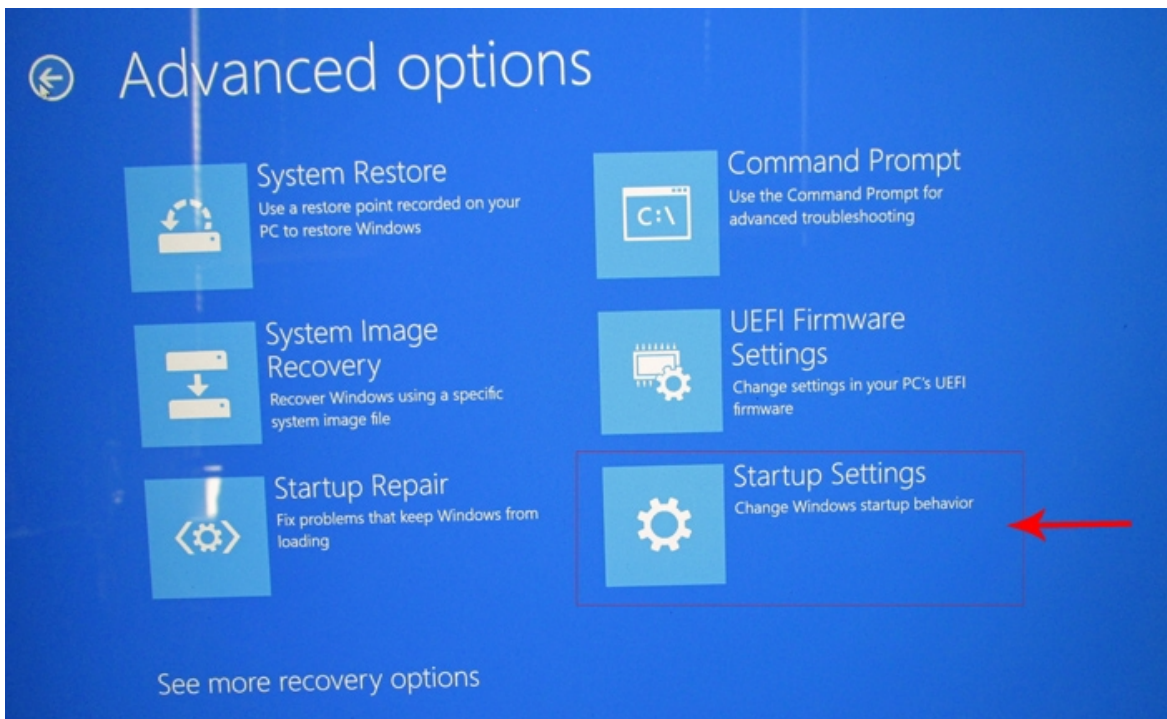
6. Once your computer has rebooted, choose the **Troubleshoot** option.



7. Click on **Advanced Options**.



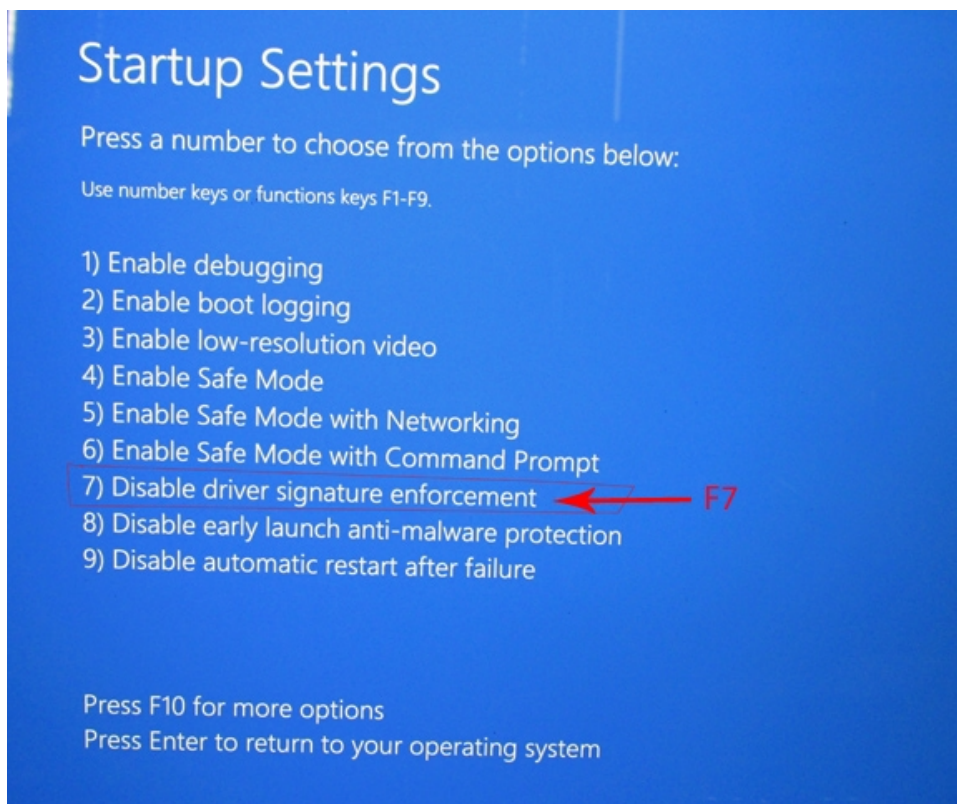
8. Click on **Startup Settings**. *Note: On some systems, this may be listed as **Startup Options**.*



9. Since you will be modifying the boot up settings, you will need to restart your computer again. Click on **Restart**.

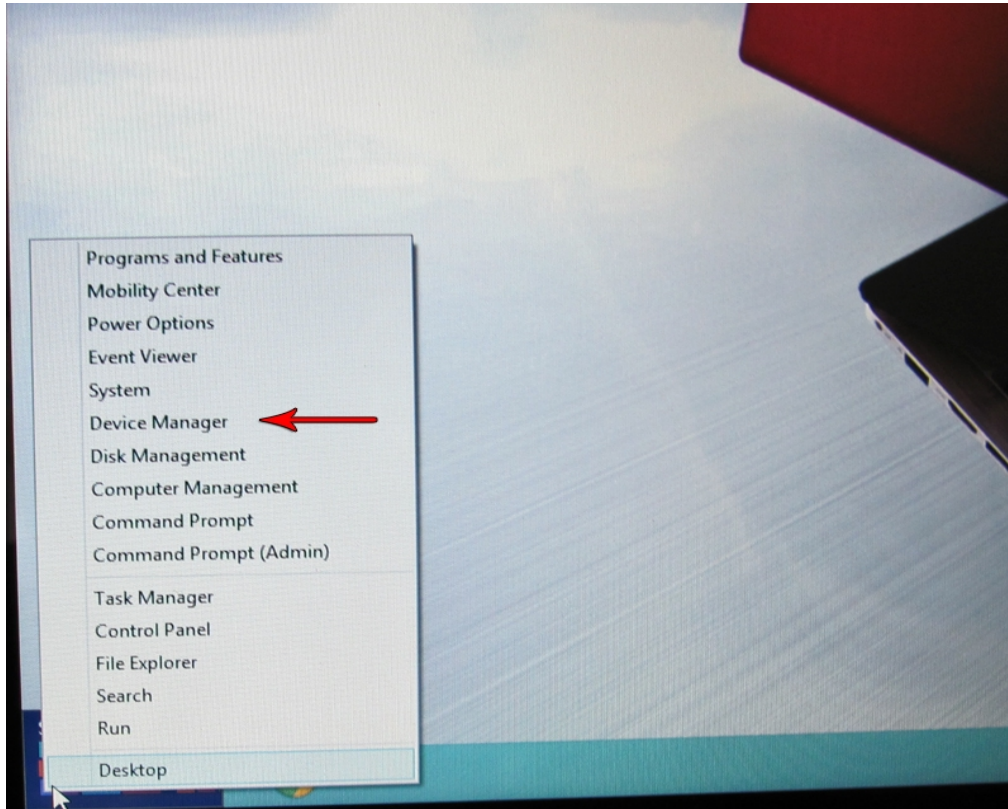


10. You will be given a list of startup settings that you will be able to change. The one you want to select is “Disable driver signature enforcement”. To choose this setting, you will need to press **F7**.

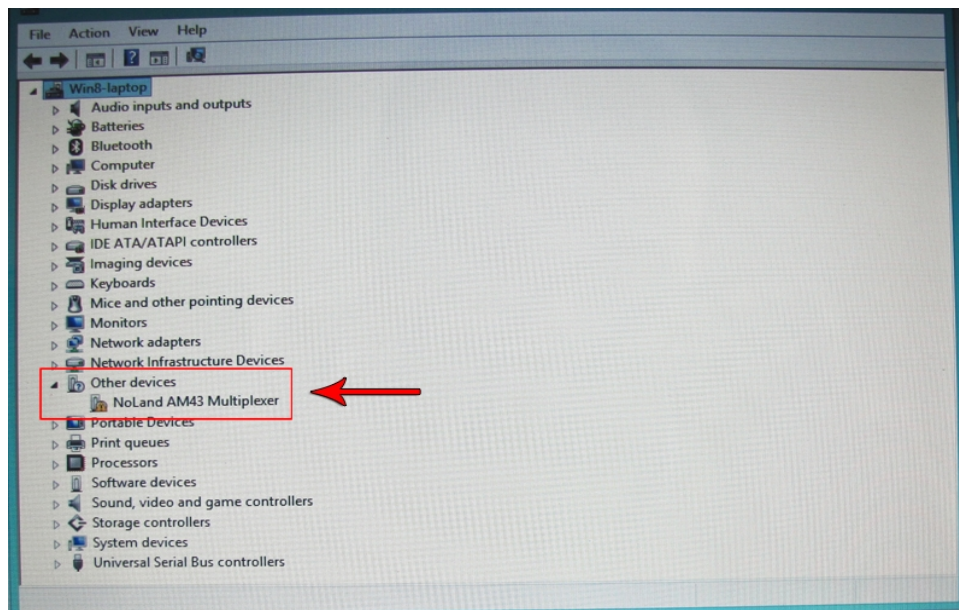


11. Your computer will reboot and you will not be able to install the drivers you need for our devices.

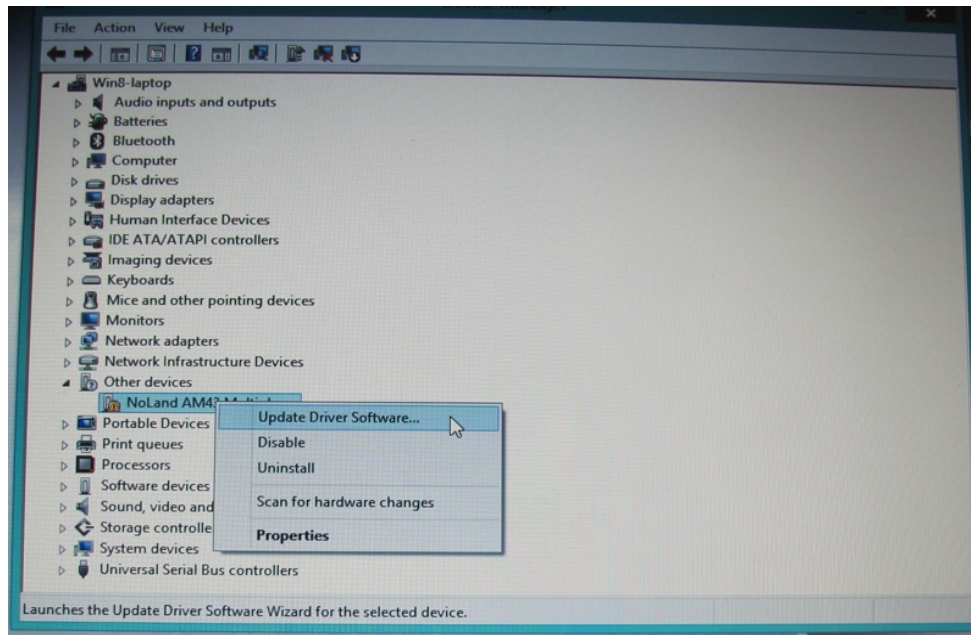
12. After computer is restarted, repeat the driver installation process. You may have to open the **Device Manager** and manually install your device's drivers. To open the **Device Manager**, move your mouse to the lower left corner, over the **Start Menu** charm.. Right click your mouse. A menu will appear. Choose **Device Manager**.



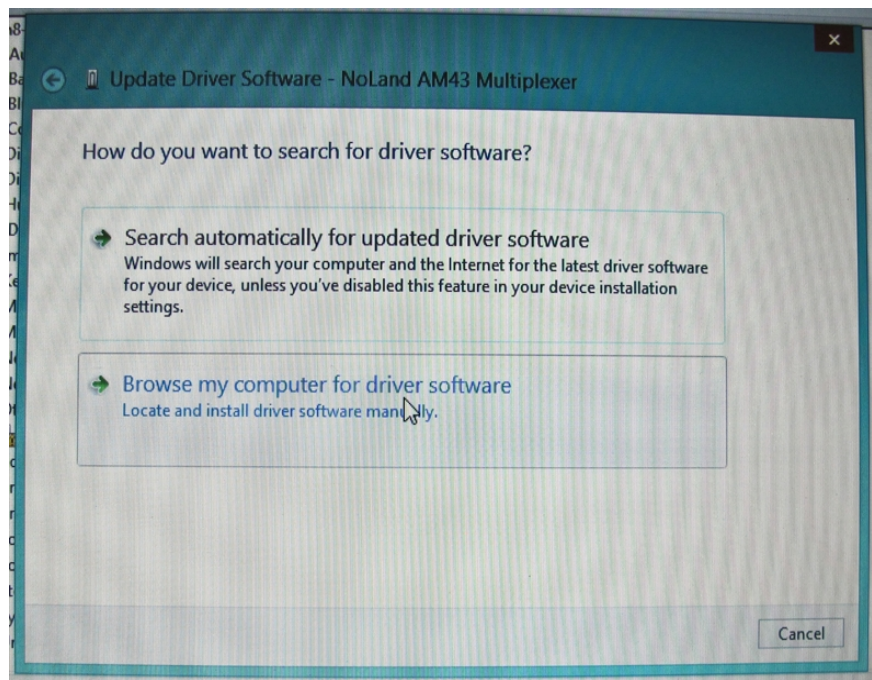
13. With the **Device Manager** opened and your NoLand device connected, locate the connected device. It will most likely be in the **“Other devices”** group, as shown below.



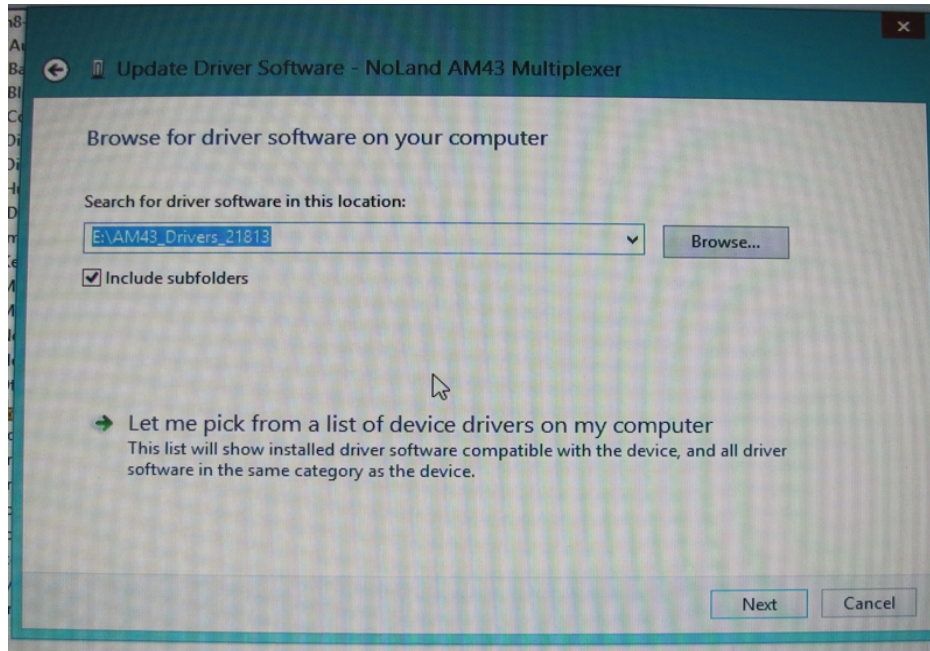
14. Right click on NoLand device. When menu appears, choose “Update Driver Software...”.



15. When window appears, click on “Browse my computer for driver software”.



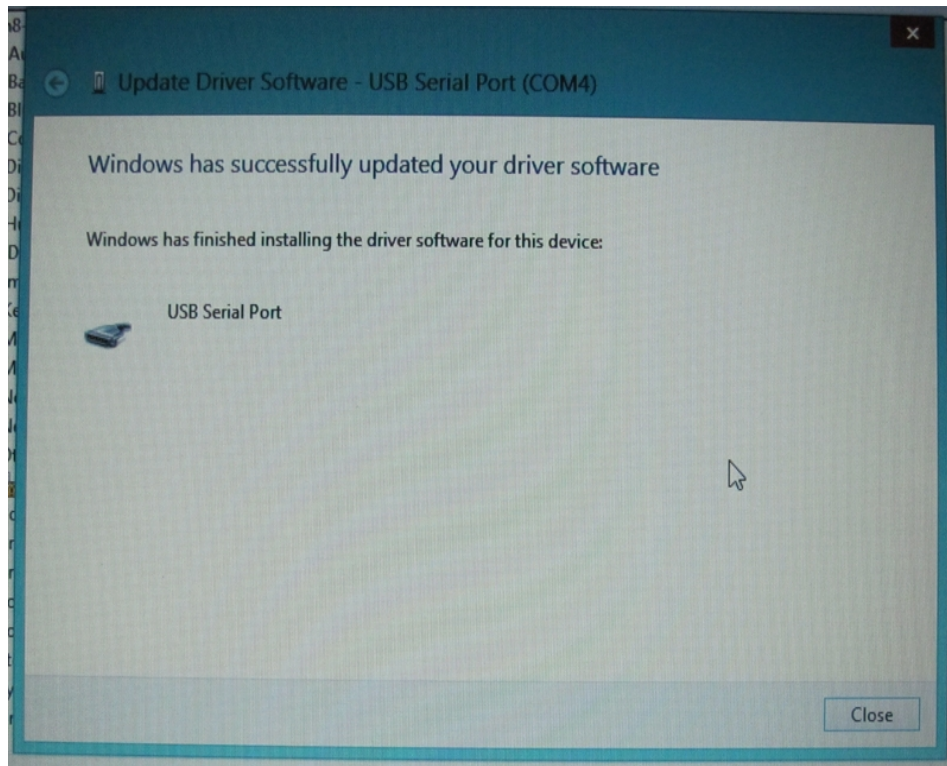
16. When the next window appears, you will need to **Browse** to the directory where your drivers are located. Click **Next** to continue. *Note: Make sure the file downloaded from the website has been unzipped or extracted.*



17. After the computer starts the driver installation process, the following Windows Security dialog pops up with a **"Windows can't verify publisher of this driver software"** warning. Choose **"Install this driver software anyway"**.



18. When operation is successful, you will see the following dialog pop up.



19. To verify connection successful, you can check the **Device Manager**. Under the **Ports** heading, you should see the NoLand device's COM port listed. (see below) Another method of check if correct is to use any terminal program available. We have a terminal program called D-port on our website, which is free to download. With the NoLand device connected, you can send a query command "@?". If connected correctly, it will display the settings of the device connected.

