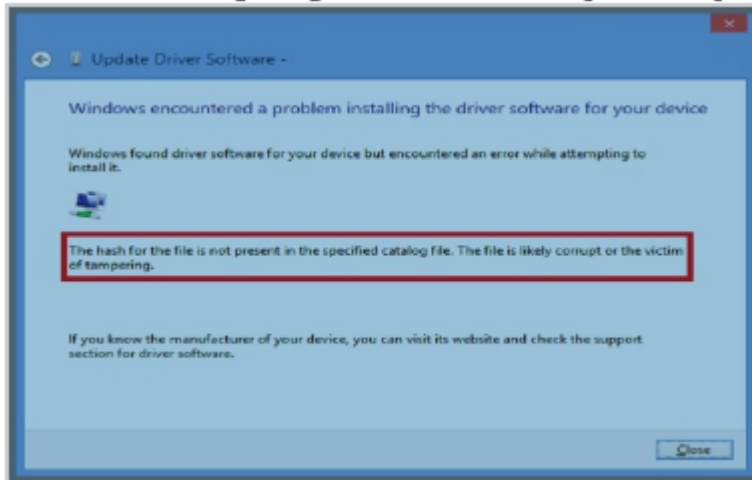


Windows 8 x64 AM43 driver installation error – signature test fails

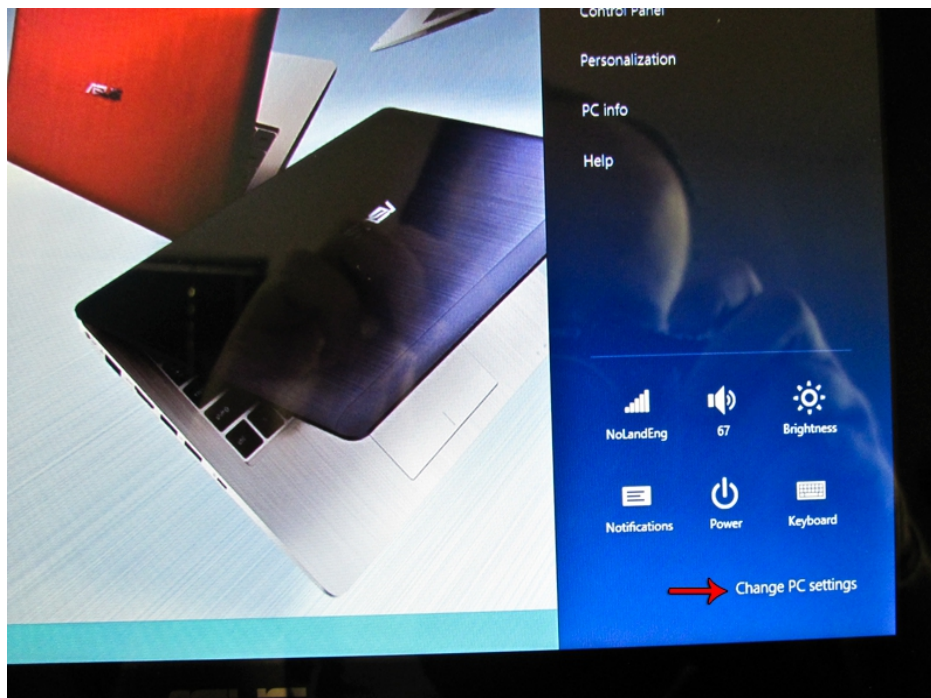
When you first attempt to install the driver for the AM43 on Windows 8 x64, you may get an error message "The hash for the file is not present in the specified catalog file. The file is likely corrupt or the victim of tampering". Then the installation process stops. Below is an example of the error box that will appear.



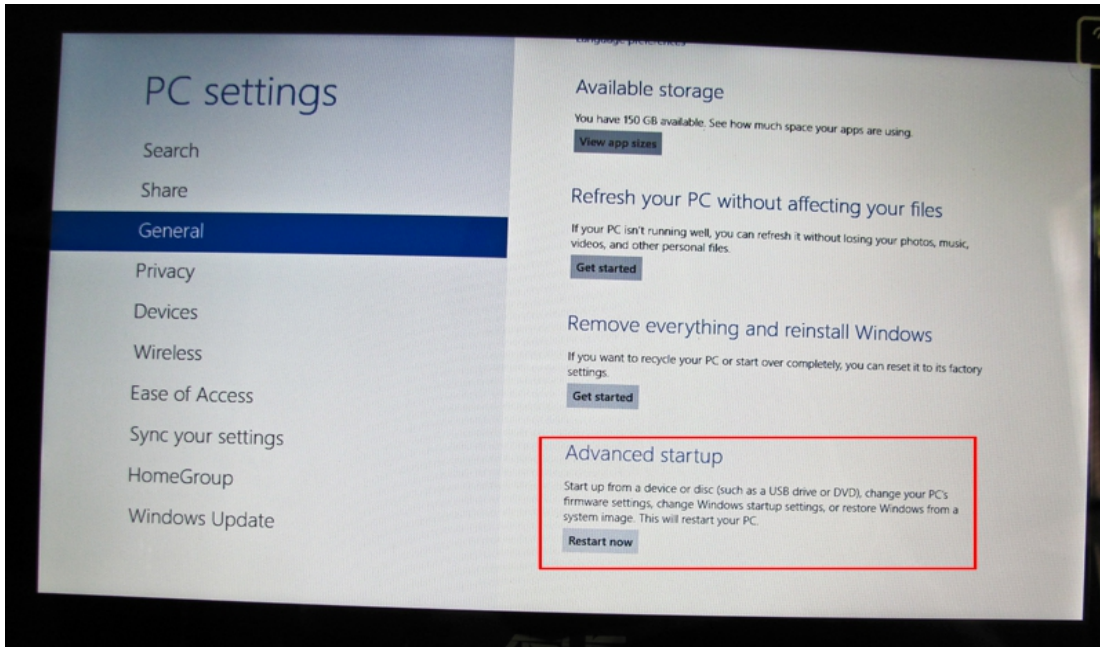
To solve this problem, you will have to turn off the Windows 8 checking of the driver's signatures.

Walk thru for turning off driver's signature.

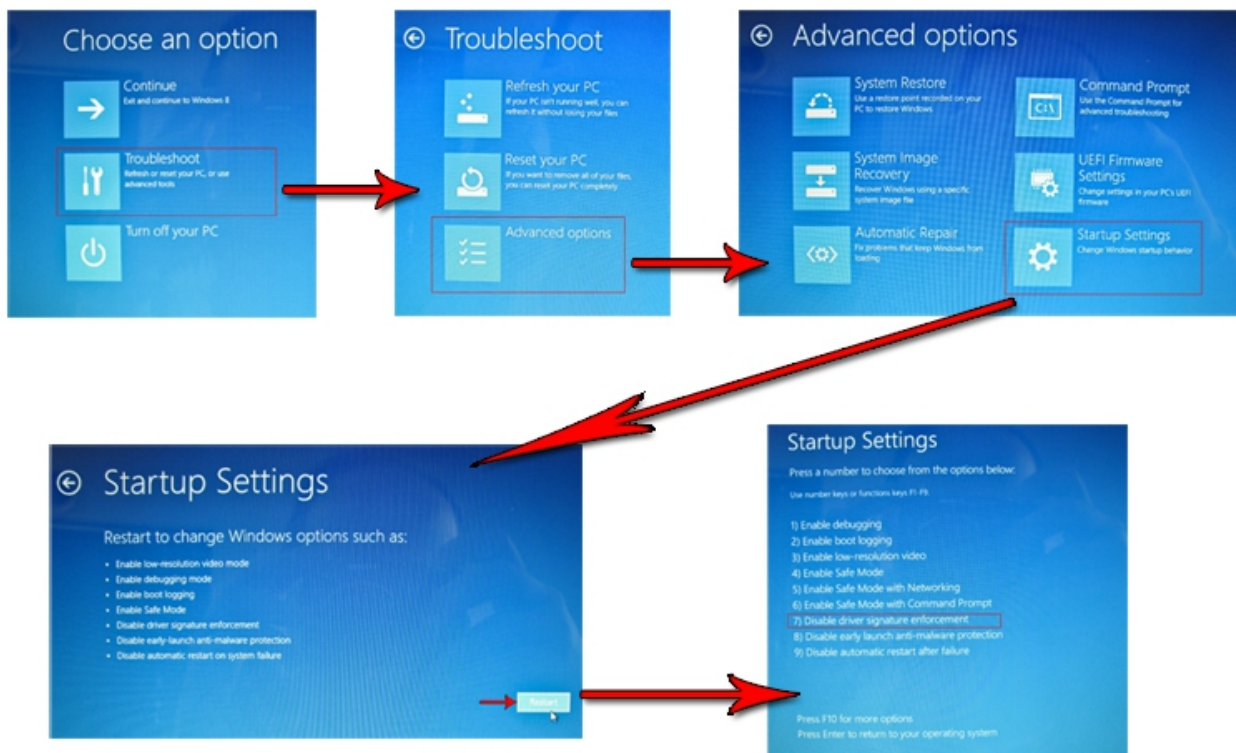
1. Press **WindowsKey+I**, to open Settings Panel. Click on "Change PC Settings".



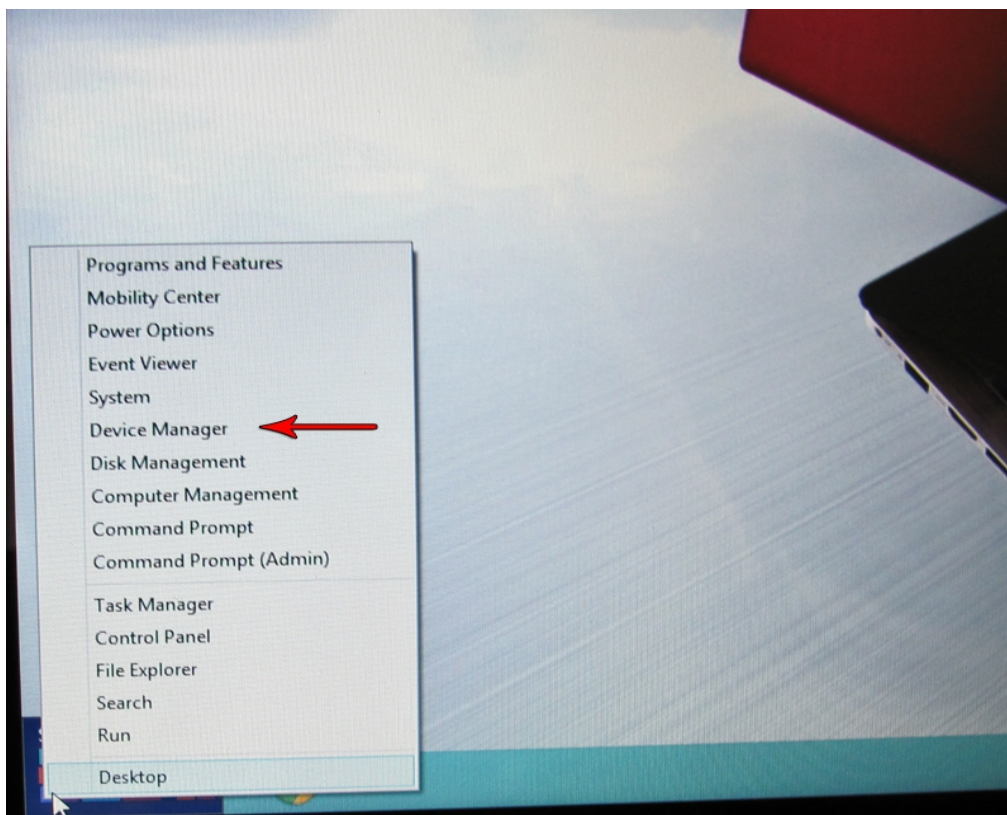
2. On the window that appears, select **General** on the left side window. Along the right side, scroll down and choose **Advanced Startup – Restart Now**.



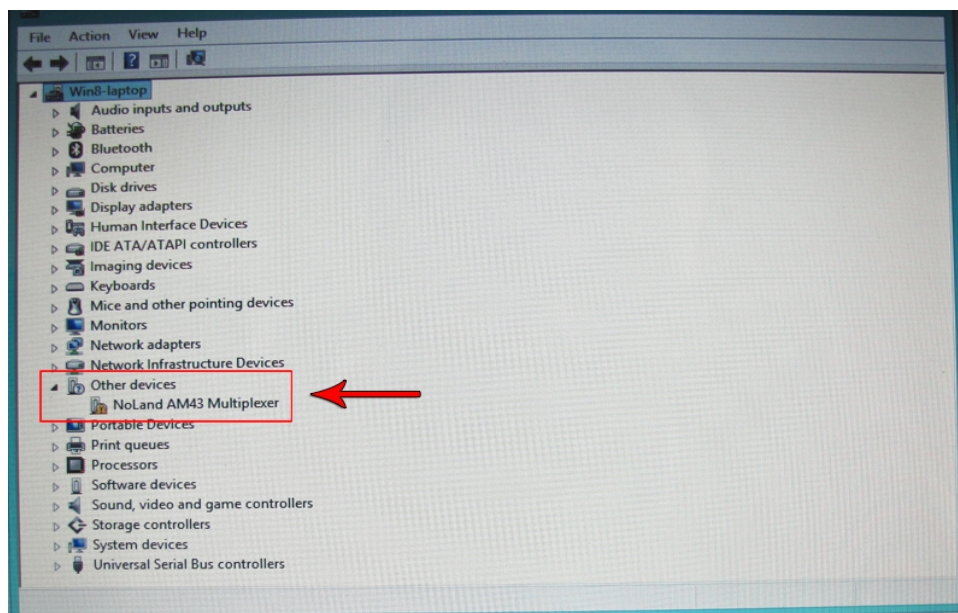
3. When computer is rebooting, a blue screen with Startup settings appears. Select **Troubleshoot**, **Advanced Options**, **Startup Settings**. Click **Restart** button. Choose the 7th bullet “**Disable driver signature enforcement**”.



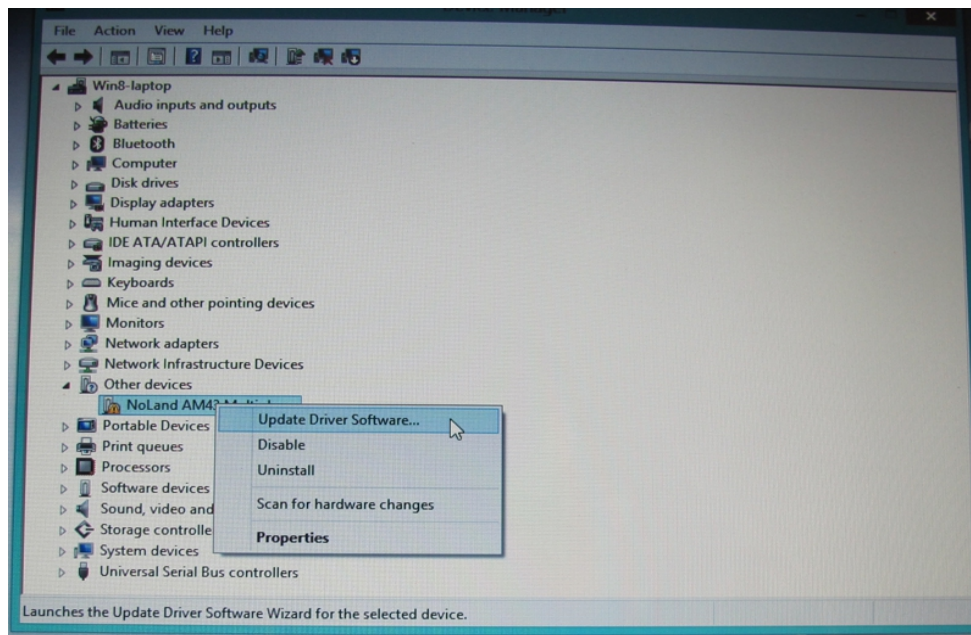
4. After computer is restarted, repeat the driver installation process. You may have to open the **Device Manager** and manually install the AM43. To open the **Device Manager**, move your mouse to the lower left corner. A small **Start** panel will appear. With the mouse hovering over **Start** panel, right click your mouse. A menu will appear. Choose **Device Manager**.



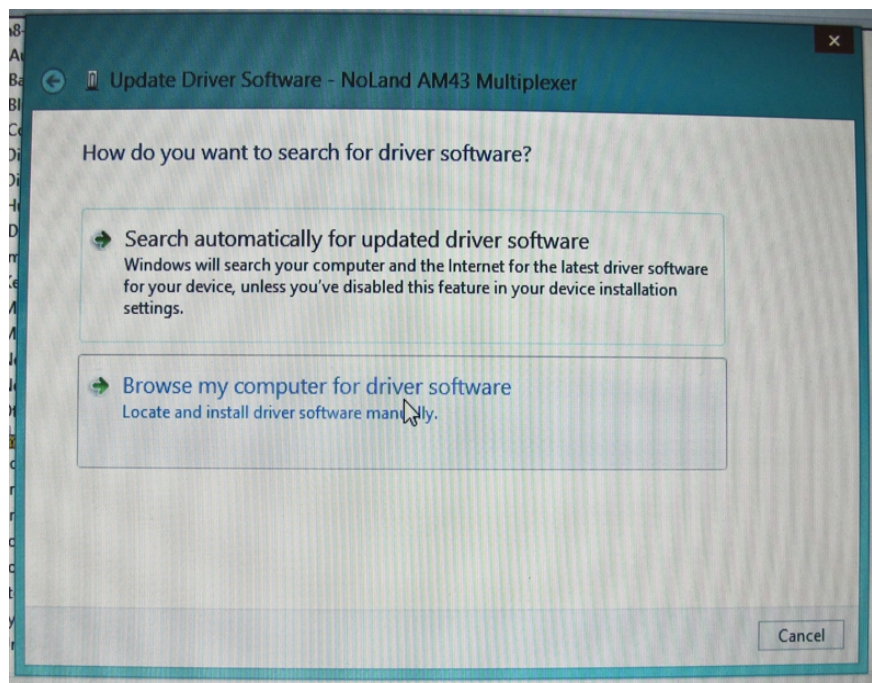
5. With the Device Manager opened and your AM43 connected, locate the connected AM43. It will most likely be as shown below.



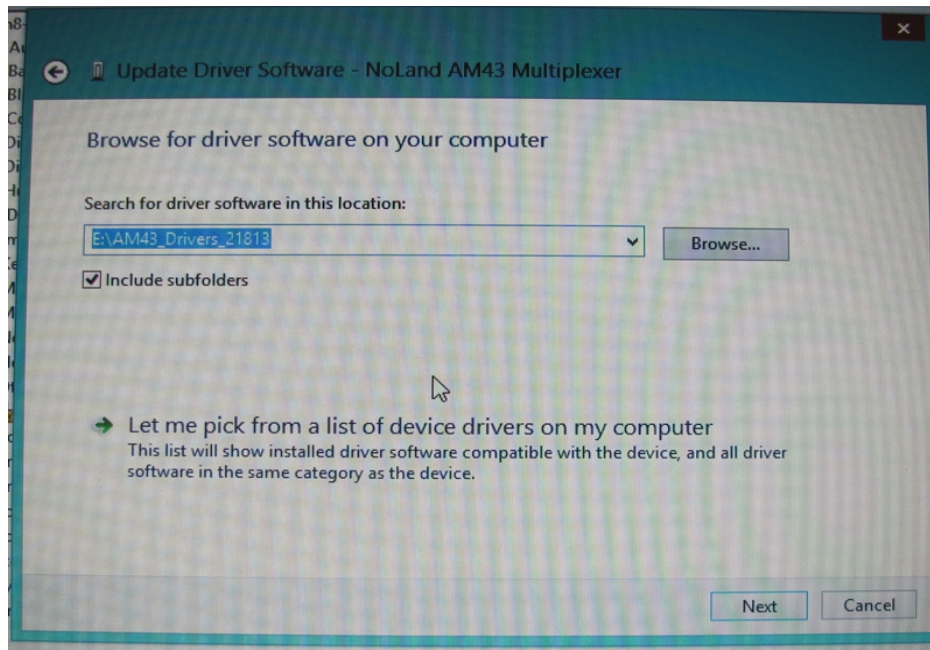
6. Right click on “NoLand AM43 Multiplexer”. When menu appears, choose “Update Driver Software...”.



7. When window appears, click on “Browse my computer for driver software”.



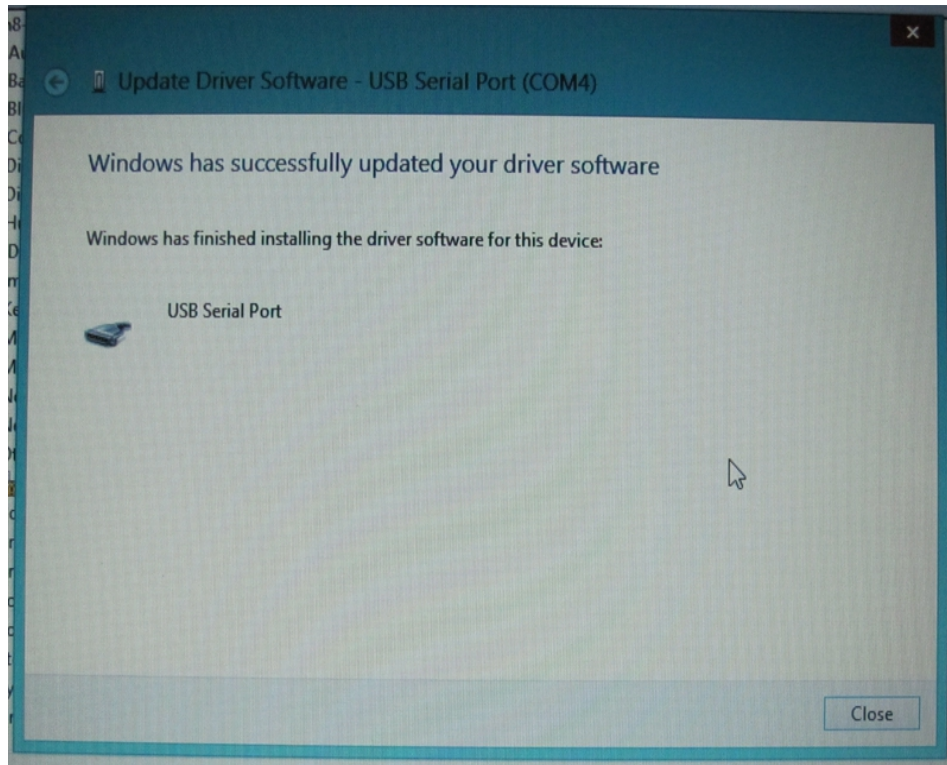
8. When the next window appears, you will need to Browse to the directory where your drivers are located. Click Next to continue. **Note:** Make sure the file downloaded from the website has been unzipped or extracted.



9. After the computer starts the driver installation process, the following Windows Security dialog pops up with a "Windows can't verify publisher of this driver software" warning. Choose "Install this driver software anyway".



10. When operation is successful, you will see the following dialog pop up.



11. To verify connection successful, you can check the **Device Manager**. Under the **Ports** heading, you should see the AM43's COM port listed. (see below) Another method of check if correct is to use any terminal program available. We have a terminal program called D-port on our website, which is free to download. With the AM43 connected, you can send a query command “@?”. If connected correctly, it will display the settings of the AM43.

