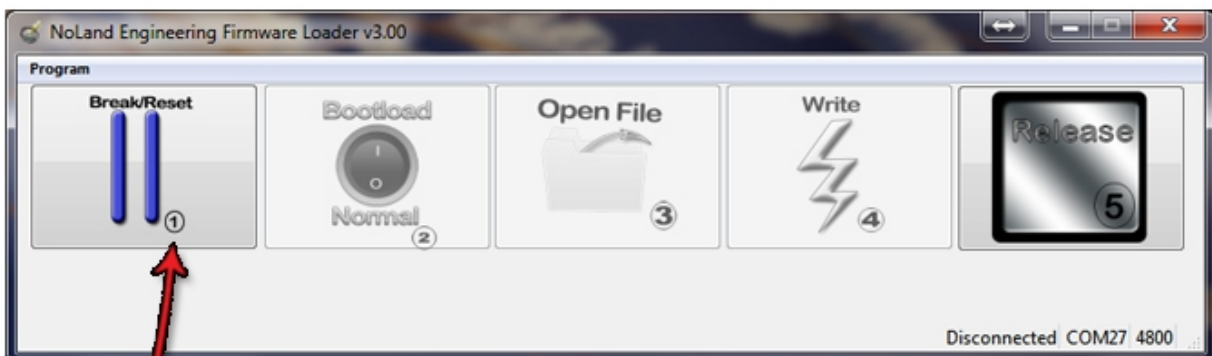
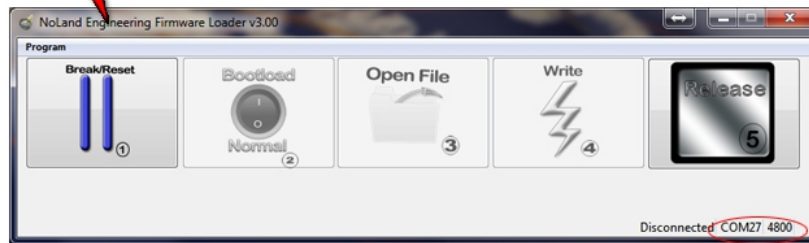
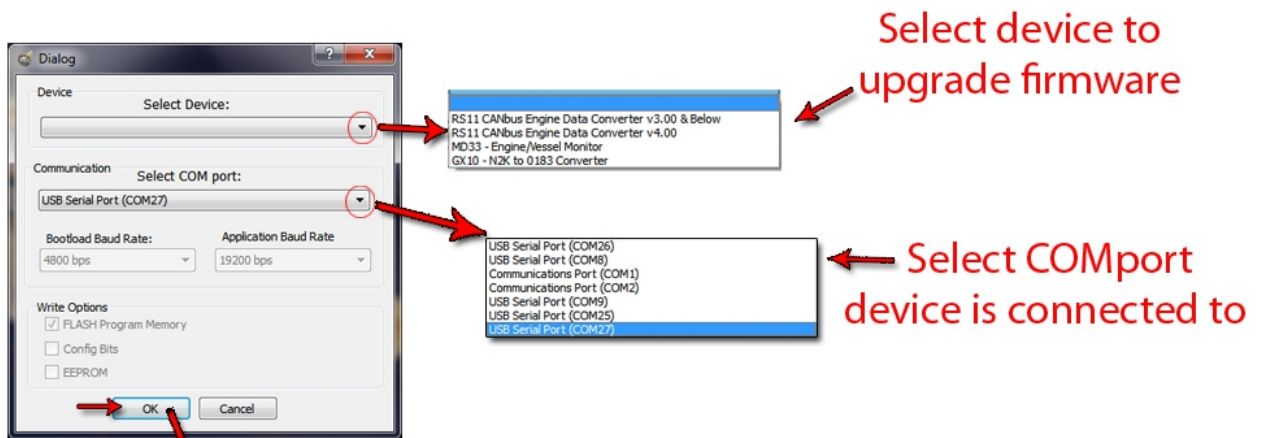


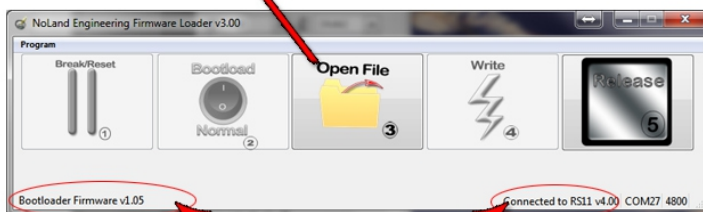
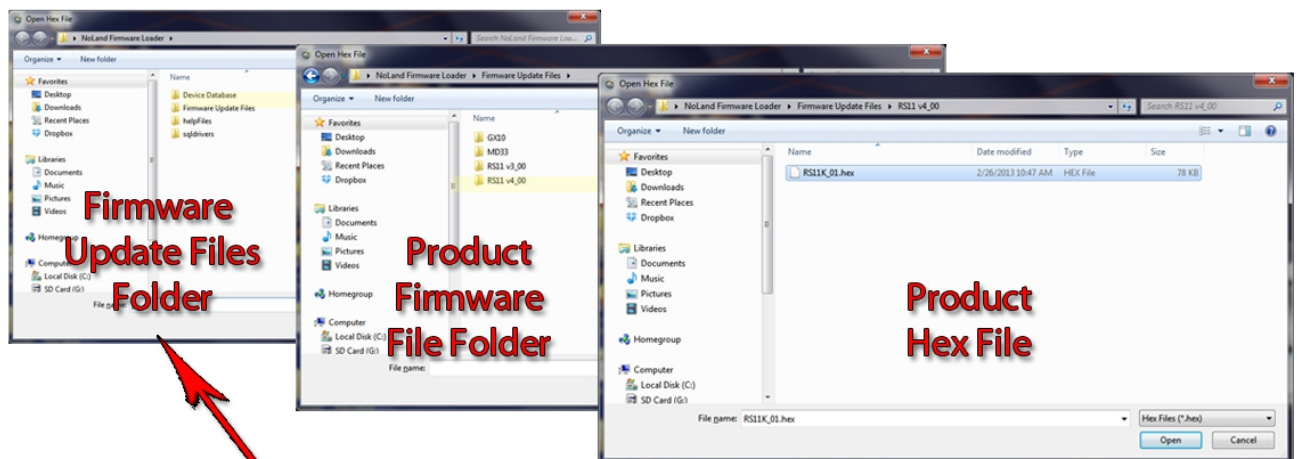
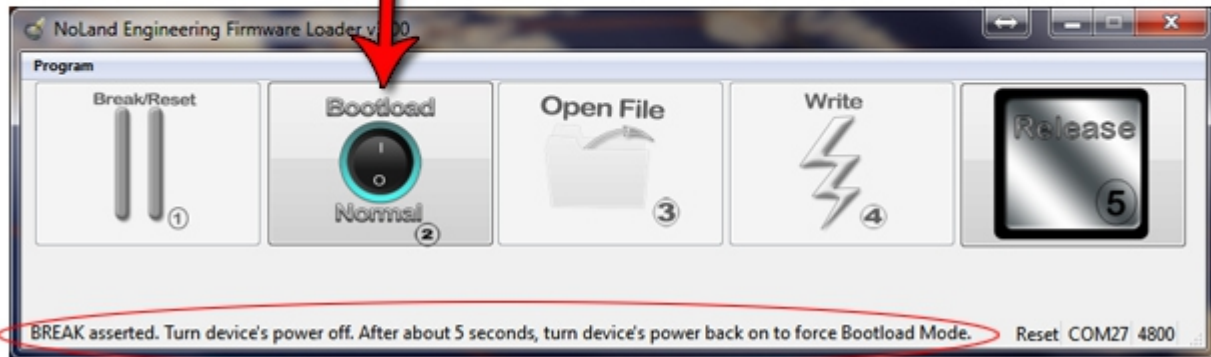
NoLand Firmware Loader Instructions

NOTE: This utility will allow you to update the firmware on the RS11, GX10 Gateway and MD33 products.



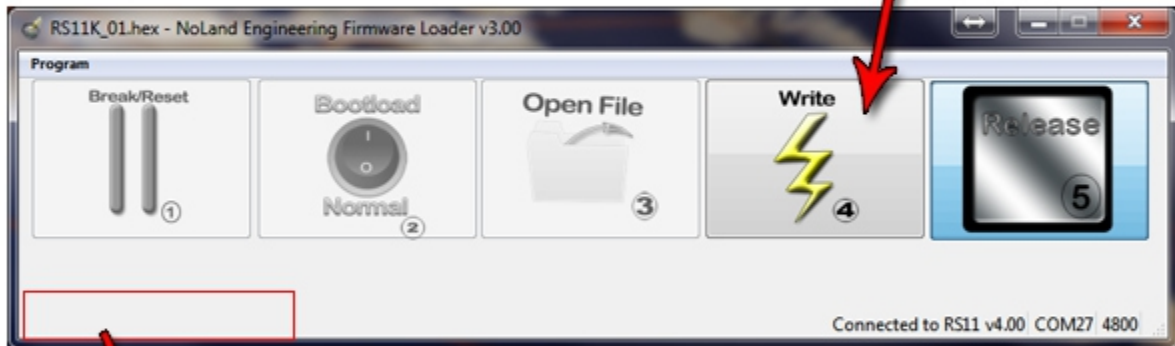
Start by
clicking here

Momentary turn off power.
Power back on and click here
to continue

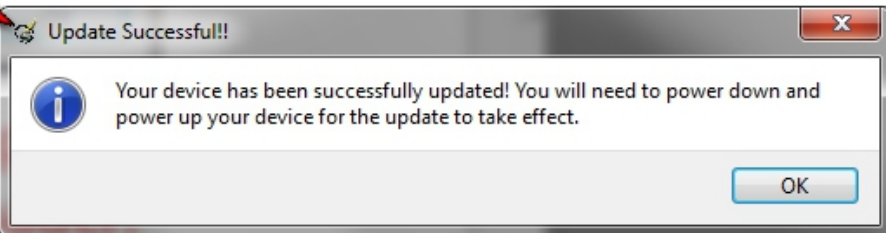
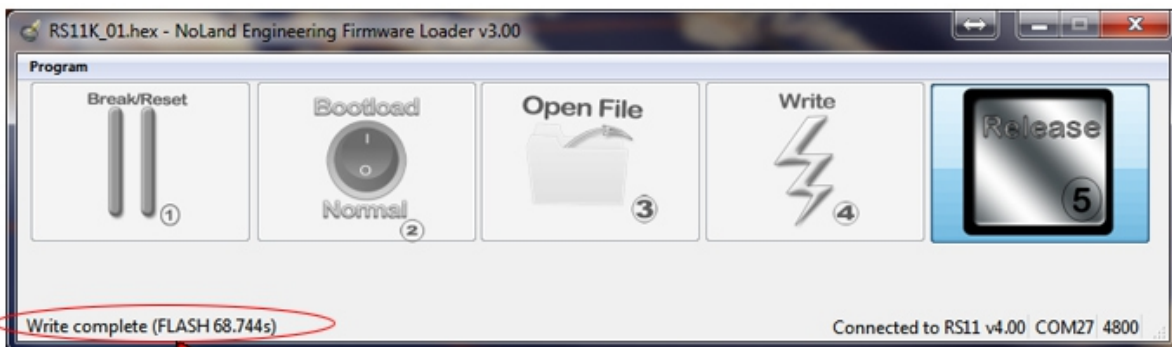


If connected correctly,
should see this.

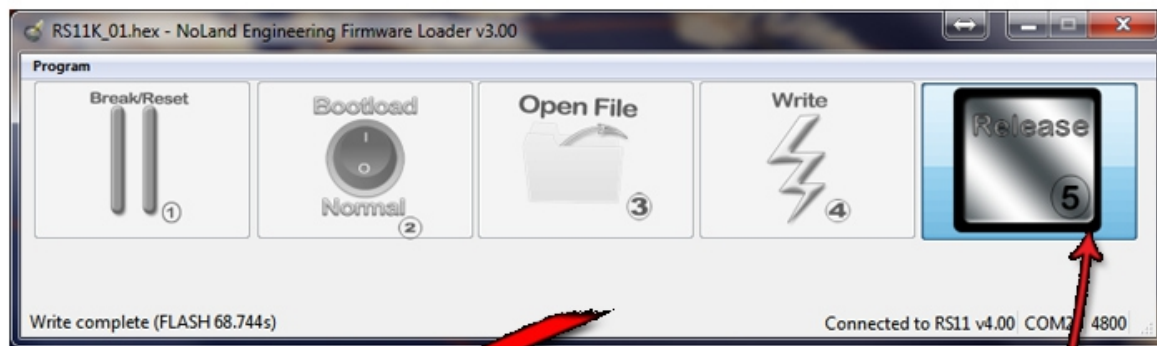
Click here to
update start update



Writing address: 0 ← writing status



Congratulations!!! You have successfully completed
updating your device. You can now close the
NoLand Firmware Loader Utility.



Click here to
release COMport and/or
to reset Firmware Loader

